



oakleaf  
design studio



## From Design to Install, We Are Here to Help

When working with our design specialists, you can expect to gain both style inspiration and practical advice to turn your new home or remodel plans into a reality.

Let the Oakleaf Designers help you with everything from your colors and layout, to communicating with the Production Team. The Oakleaf Designers make sure your project is delivered exactly how you pictured it. The DeWils Installation Team can then seamlessly fit the cabinetry to your home as quickly as possible.

And just like our products, our services are custom to your needs. This means that Oakleaf is also happy to work directly with your designers, contractors or builders as well.

---

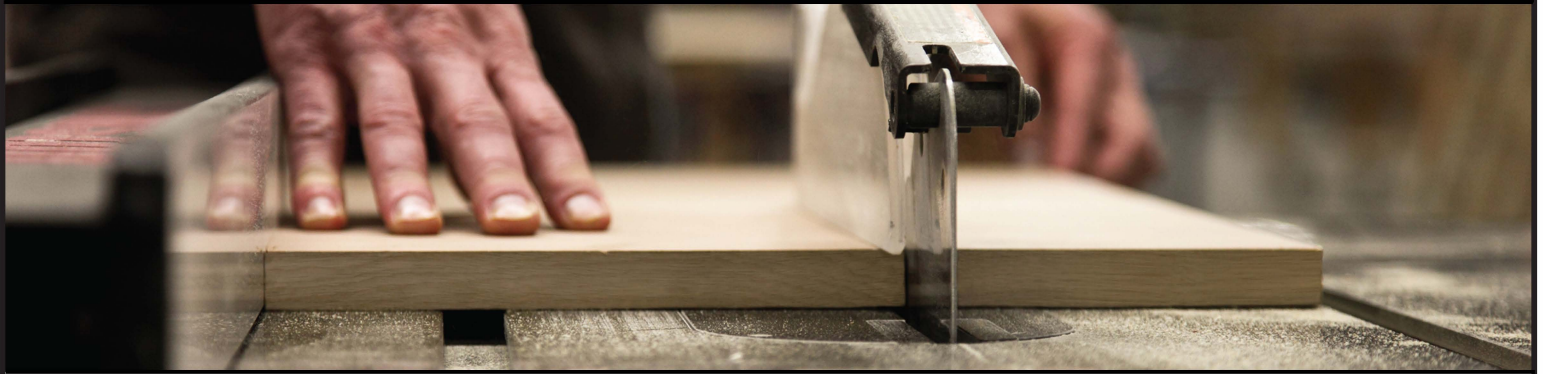
"I enjoy working with customers, using my knowledge and design ideas, to realize their dreams. In the end, it's not just about a great design but enjoying the process along the way."

*Designer, Oakleaf Fine Cabinetry*

---

**VISIT AN AUTHORIZED OAKLEAF  
DEALER SHOWROOM TO FIND  
INSPIRATION, MEET OUR  
DESIGNERS AND MAKE A PLAN.**

Because life takes place in the kitchen.



# What to Expect: The Oakleaf Process

## INITIAL VISIT TO THE SHOWROOM

- Bring inspiration pictures and a layout or blueprint of the room.
- You will meet with the designer who will be committed to your unique project through the whole process.
- Be prepared to talk budget, time frame, wood types, stain or paint colors, appliances you'll be using and most importantly, how you see yourself using the space.

## Overwhelmed by Options?

---

*"My best tip to anyone who is struggling with making design or product choices is to understand that we live in a world that is full of a million ideas and we can borrow some of them, but never all of them in the same space or time. So do what you love, with the ideas you have, and be your own trend!"*

*Oakleaf Fine Cabinetry Designer*

---

## DESIGN PHASE

- All Oakleaf designers use a software program designed for our cabinetry.
- Your designer will send you emails with renderings of what the cabinets would look like and you can discuss changes.
- Once the design has been finalized, your designer will do a final measure of the space and you will have an in-person meeting at the Design Center to go over the final details.

## PRODUCTION & INSTALLATION

- With an approved final design, your designer will place the order with the factory and set up a time for the installation of the cabinets based on lead times and set deadlines.
- For remodel projects, the customer will need to make sure that all existing cabinets have been removed and walls and floors are prepped and ready for cabinets to be delivered and installed.

Because life takes place in the kitchen.



# Tell Us About Your Project

## **THE FIRST THING THAT WE'LL NEED IS AN OVERVIEW OF THE PROJECT.**

It's critical that we understand the basics of what you're looking to do to help facilitate the process. Often, if you're just replacing cabinetry, we can work with you directly and have our Oakleaf Installers fit them seamlessly into your home. If walls need to be moved, or electrical and plumbing changes need to be made, a contractor should be involved. We are happy to work with your team, should you already have one in place. Additionally, we can always provide you recommendations from our local network of builders.

---

## **NOT SURE IF YOU NEED A CONTRACTOR?**

*Answer the questions below to give our design team a better idea of the scope of your project.*

Is this a remodel or new construction?

Are you working within a set budget?

Are you currently working with a contractor, architect or interior designer?

What's your time-frame on when you'd like the project completed?

If this is a remodel, are you staying within the current layout of your space?



# Tell Us About Your Style

## **OUR DESIGNERS WILL HELP YOU NAVIGATE.**

Help us to visualize your dream space. Gather photos of spaces you love on Pinterest.com or Houzz.com and be prepared to share them with your designer! Our designers will have questions about your own personal style - is it traditional or modern? Dark or light? It's also helpful if you first take a look at the Oakleafds.com website to familiarize yourself with our product styles and terminology.

---

## **WE WILL ALSO NEED TO GAIN AN UNDERSTANDING OF YOUR LIFESTYLE AND HOW YOU ENVISION USING YOUR NEW SPACE.**

*Answer the questions below to give our design team a better idea of your style and functionality.*

What's your design style?

Are there any handicapped or limited movement members of your family?

How large is your family and do you do much entertaining?

What are your priorities, both aesthetically and functionally?



# Tell Us About Your Space

## **CREATE YOUR VISION, WITH OUR EXPERTISE.**

Your existing space will guide some of the decisions that need to be made, so it's important to consider its layout and function. Photographs and measurements of your space are very helpful.

---

## **BEFORE WE EVER SEE YOUR SPACE, WE CAN GET AN IDEA OF WHAT YOU'RE WORKING WITH.**

*First, answer the questions below to give our design team a better idea of your existing space.*

What do you like about your current space?

What do you dislike about your current space?

Do you need to increase storage within your space?

We will also want to discuss measurements. On the following page, we provide some guidelines on how to provide helpful measurements. *(We offer an in-home consultation and measurement for a fee, that goes towards the purchase of your cabinetry if you choose to move forward, if you'd prefer.)*





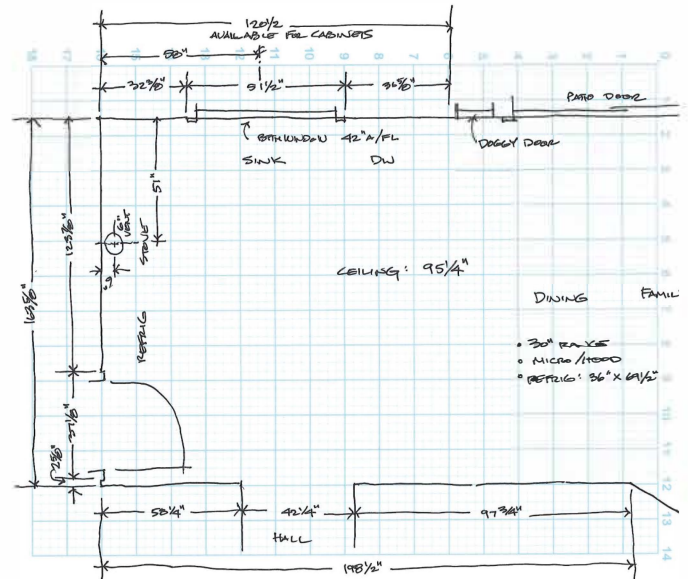
oakleaf  
design studio



# How to Measure Your Space

**MAKE SURE TO GET A FULL PICTURE.**

- ▶ room outer dimensions
- ▶ placement and dimensions of appliances  
(stove, refrigerator, dishwasher, microwave, range hood, oven, etc.)
- ▶ placement and dimensions of sink
- ▶ windows & doors
- ▶ doorways and hallways
- ▶ ceiling height
- ▶ connections to adjacent rooms



**ACCURACY IS IMPORTANT.**

- All window and door measurements need to be from outside of trim to outside of trim.
- Provide a measurement from finished floor to ceiling. It is a good idea to measure in several places to check if the floor or ceiling is significantly out of level. This is particularly important if you intend to have cabinets to the ceiling.
- Overall room measurements are helpful so that we can cross check the sum of the individual measurements to the overall of the room.

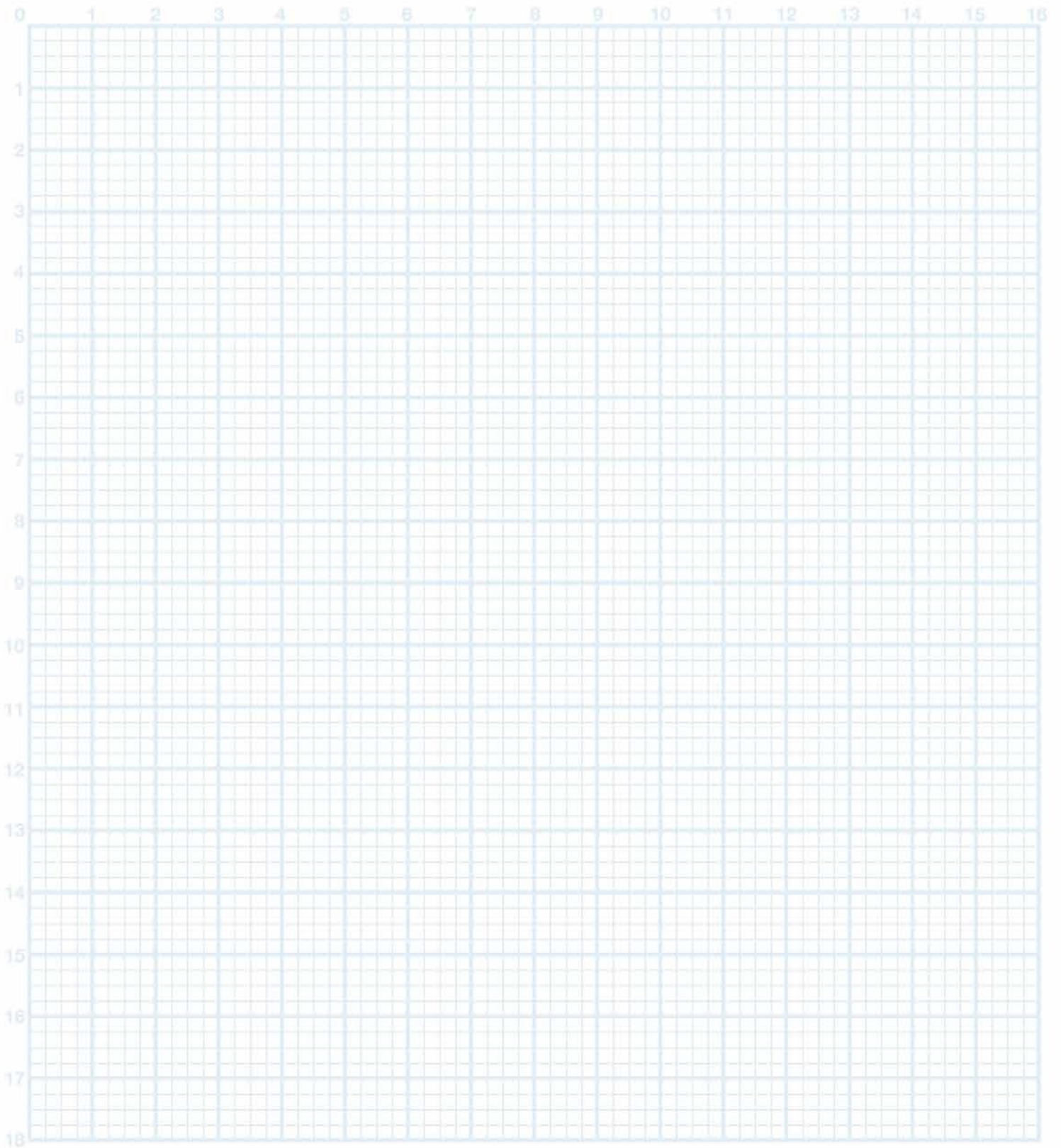
**THE MORE DETAILS, THE BETTER.**

- When there is a window over the sink, a measurement from a corner of the room to center of the window is helpful.
- The height from the finished floor to the bottom trim of the window is useful.
- Provide additional notes about areas that you feel may have an impact on your design or the installation of the cabinetry, plumbing, vents (including heating vents), etc.

Because life takes place in the kitchen.



oakleaf  
design studio



Because life takes place in the kitchen.